

Jane's journey

Hinchinbrook LGA – Coronary Artery Disease

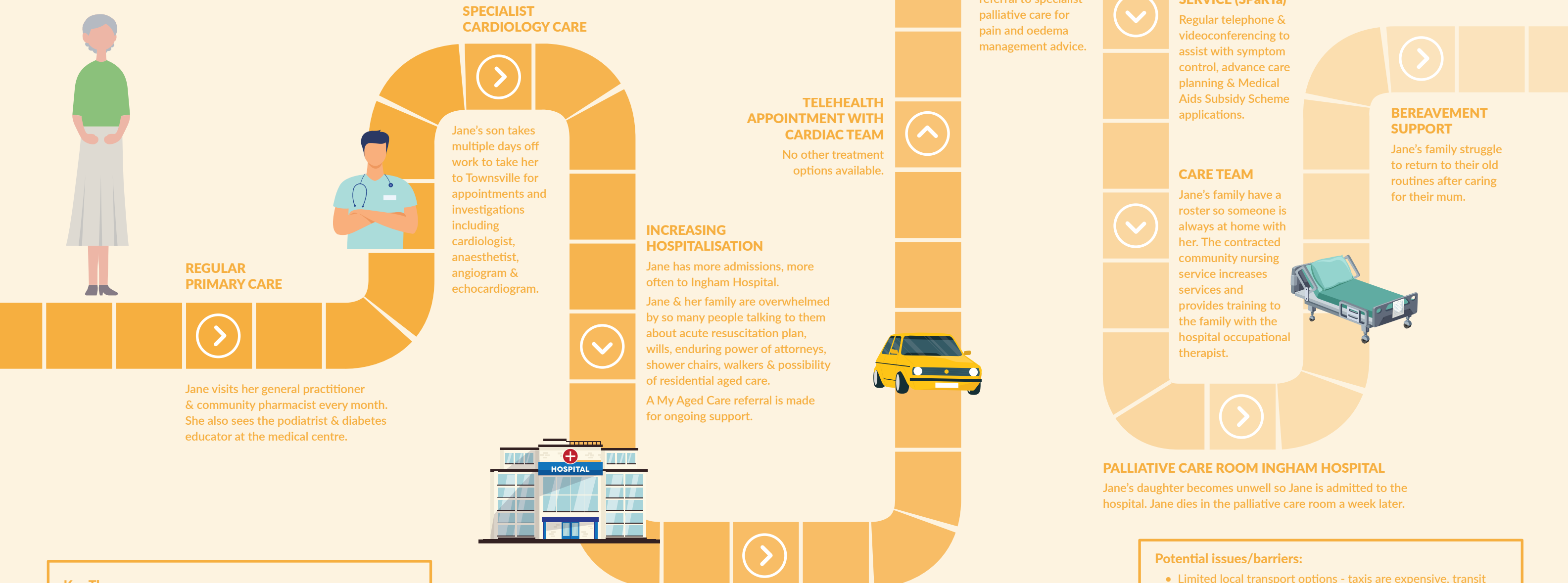
Jane is an 82-year-old woman who lives alone on a small property 25kms from the township of Ingham. Jane has 2 adult children with their own families who live in Cardwell. Jane has lived alone for 10 years after her husband died and has been independent with her activities of daily living and is still driving. She drives to town once a week to pick up groceries and medications and attend any relevant appointments. However, Jane is not active outside of these activities due to her age, frailty, and medical conditions. Jane has recently been diagnosed with Coronary Artery Disease and was told by her cardiologist it would be too risky to perform surgery and she would be managed conservatively with medication to reduce her symptoms.

An initiative of **PalliativeCare** QUEENSLAND
PALLIATIVECAREQLD.ORG.AU

Supported by **phn** NORTHERN QUEENSLAND
An Australian Government Initiative

CELC Townsville
CONNECTING END OF LIFE CARE

The CELC Townsville project is administered by Palliative Care Queensland and supported by funding from Northern Queensland Primary Health Network (NQPHN) through the Australian Government's PHN program.



- Key Themes:**
- Importance of primary care when living with chronic disease
 - Frailty - declining function & independence
 - Challenging without very supportive family
 - 2 designated palliative care rooms at Ingham Hospital
 - Geographical distance from town and family
 - Advance Care Planning

- Potential issues/barriers:**
- Limited local transport options - taxis are expensive, transit care can be unreliable due to workforce shortages
 - Ingham Travel to Townsville for specialist appointments but it's easy to miss the bus home
 - Appointment Coordination
 - Local Commonwealth Home Support Programme unable to offer services due to workforce shortages
 - Only one nurse in the community who provides complex end of care including use of syringe drivers